



US Army Corps  
of Engineers  
Baltimore District

August 19, 2019



## PUBLIC NOTICE

### **Atlantic Coast of Maryland Shoreline Protection Project Draft Finding of No Significant Impacts and Environmental Assessment: Offshore Shoals in Federal Waters as Sand Sources**

**ALL INTERESTED PARTIES:** The U.S. Army Corps of Engineers, Baltimore District (USACE) and the Bureau of Ocean Energy Management (BOEM), in partnership with the Maryland Department of Natural Resources (MD DNR), have prepared a draft Environmental Assessment (EA) and a Finding of No Significant Impact (FONSI) for proposed dredging of offshore shoals in federal waters to obtain sand for the Atlantic Coast of Maryland Shoreline Protection Project. USACE and MD DNR place sand on the beach of Ocean City, generally every four years, to reduce risk of coastal storm damage. The next sand placement event is anticipated by the year 2022. USACE anticipates dredging an average of approximately 1,070,000 cubic yards of sand from offshore shoals each future sand placement event.

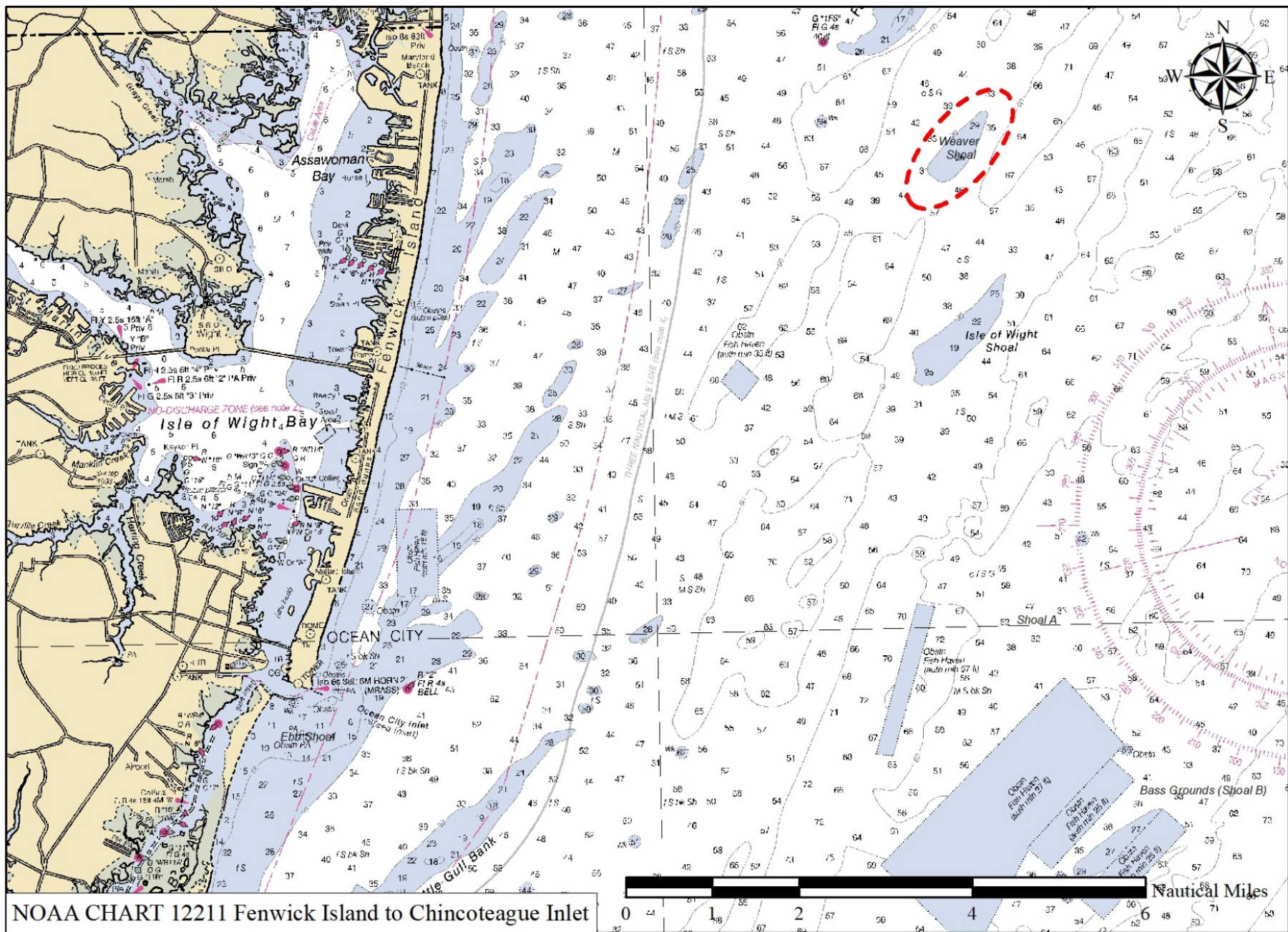
USACE and BOEM prepared an Environmental Impact Statement (EIS) in 2008 evaluating four shoals in federal waters on the Outer Continental Shelf as sand sources for the project: Weaver Shoal, Isle of Wight Shoal, Shoal A, and Shoal B (also known as Bass Grounds) (Enclosure). The project has not utilized any of these four offshore shoals as borrow sources yet because sufficient sand was previously available from sources in nearby state waters.

The draft EA updates findings of the 2008 EIS. Weaver Shoal is recommended as the sand source for the next nourishment cycle and up to two additional cycles. Dredging would be conducted following constraints to minimize long-term impacts to offshore shoal habitats. Bathymetric surveys would be conducted to assess shoal conditions and plan dredging each cycle. In the future, sand needs would be reassessed, and sand would be dredged through 2044 in accordance with the 2008 EIS.

In compliance with the National Environmental Policy Act (NEPA), USACE and BOEM have prepared this draft EA and evaluated potential effects on the human environment. Resource agency and public input was incorporated into the recommended alternative. All applicable environmental laws have been considered. Changes in impacts from what was described in the 2008 EIS would be minor and not result in significant effects.

USACE and BOEM request comments regarding the draft EA and FONSI within thirty days of the date of this notice. For federal and state agencies receiving a copy of this notice, we request that you provide comments concerning your responsibilities. The draft EA and FONSI are available at the USACE website: <http://www.nab.usace.army.mil/oceancity> The documents are also available in the following Worcester County, MD, public libraries for review: Berlin Branch, Ocean City Branch, and Ocean Pines Branch. Comments can be submitted electronically to: [christopher.c.spaur@usace.army.mil](mailto:christopher.c.spaur@usace.army.mil). Written comments can be sent to: U.S. Army Corps of Engineers, Attn: Christopher Spaur, Planning Division, 10th Floor, 2 Hopkins Plaza, Baltimore, MD 21201. If you have any questions, please contact Christopher Spaur by telephone at (410) 962-6134 or by email at the address above.

Daniel M. Bierly, P.E.  
Chief, Civil Project Development Branch  
Planning Division



Enclosure